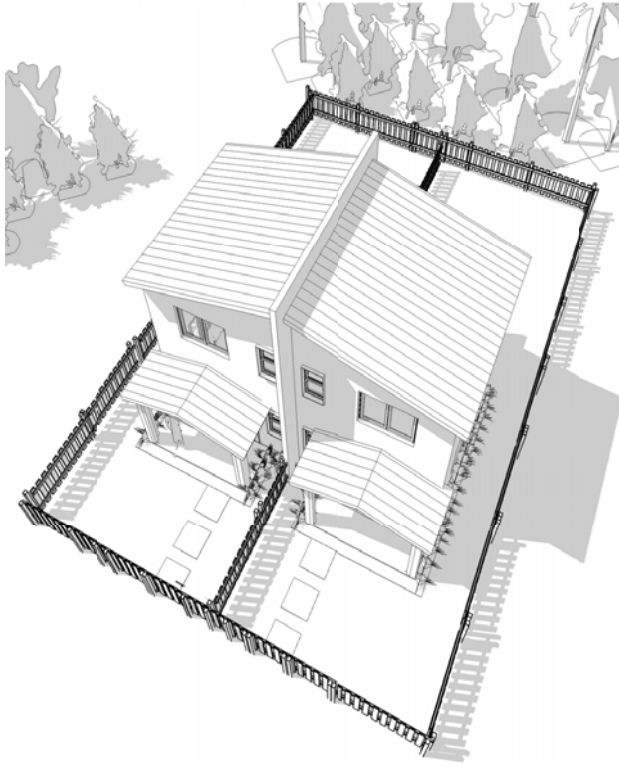


DUPLEX TOWNHOME (ONE BEDROOM)



Exterior views for illustration purposes only.

Plans are approved by KSAC and NEPA.

The developer reserves the right to make adjustments / changes to the plans, materials, finishes without notice. Furniture, landscaping, and fence are not included.

Lot sizes vary, refer to subdivision and individual boundary plan by Commissioned Land Surveyor.

All Designs indicated in these brochures are Copyright © 2018 (WHJ) World Homes Jamaica, Ltd. All rights reserved.

REV. 2018. 07



WORLDHOMESJM.COM

FORESHORE ESTATE

FOR INFORMATION:
876.382.0012 (Digicel)
876.513.9538 (Flow)

DUPLEX TOWNHOME (ONE BEDROOM)

AREA + LOT SIZE

- Typical Lot Size: 1,082 sq ft / 201.2 m²
- One Bedroom Unit Area:
424 sq ft / 39.4 m²
- Two-Storey Townhome
- Ground Floor Area
229 sq ft / 21.3 m²
- Upper Level Area
195 sq ft / 18.1 m²

OPTIONAL EXPANSION

- Two Bedroom Expanded Unit Area
393 sq ft / 36.5 m²
- Total Home Area (with Expansion)
817 sq ft / 75.9 m²

FEATURES INCLUDED

- 6" Solid Concrete Walls
- Single Glass UPVC Windows with Insect Screens
- Alu-zinc Roofing
- White Plaster Interior Walls
- Exterior Paint (Color by Developer)
- Exposed Wood Truss High Ceiling with T-111 Plywood
- Ceramic Tile Floors

GROUND FLOOR

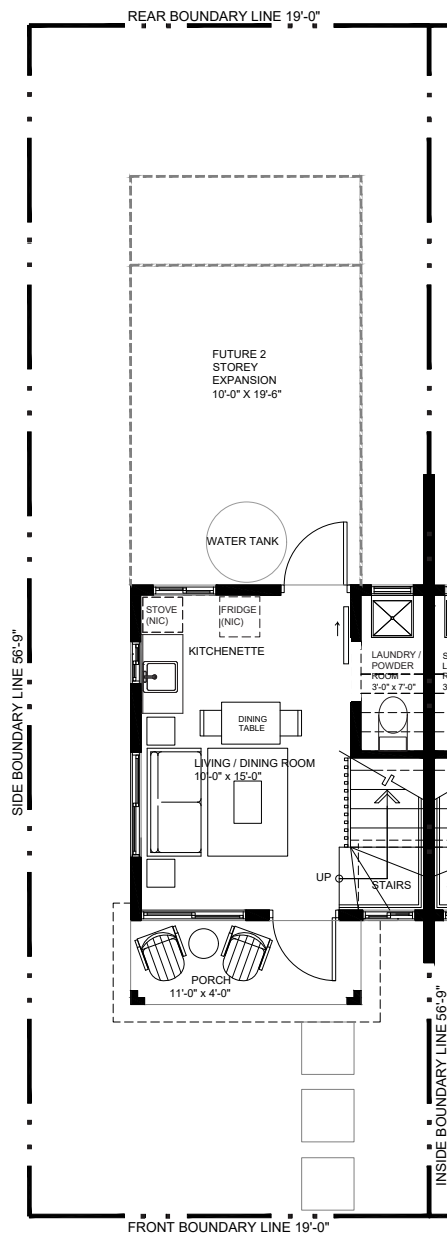
- Living / Dining room
- Kitchenette Cupboard with Stainless Steel Sink and Utensil Drawer
- Downstairs Interior Laundry / Power Room with Laundry Tub, Toilet, no Medicine Cabinet
- Wood Stairs and Railing

UPPER LEVEL

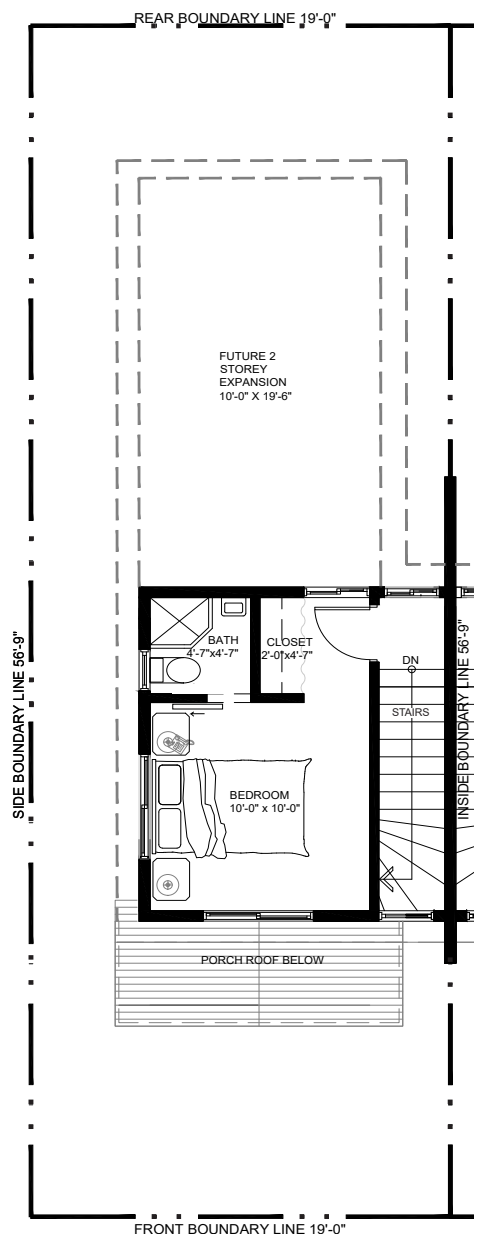
- Upstairs Bedroom with Closet
- Upstairs Bathroom with Toilet, Wash Basin, Tiled Shower, Medicine Cabinet

ADD-ON PACKAGES

- Ground Cover / Stepping Stones
- White Picket Fence at Boundary
- A/C Unit
- Upper Kitchen Cabinet



GROUND FLOOR PLAN



UPPER FLOOR PLAN

Plans are approved by KSAC and NEPA.

The developer reserves the right to make adjustments / changes to the plans, materials, finishes without notice. Furniture, appliances, TV's, landscaping, and fence are not included.

Lot sizes vary, refer to subdivision and individual boundary plan by Commissioned Land Surveyor.

All Designs indicated in these brochures are Copyright © 2018 (WHJ) World Homes Jamaica, Ltd. All rights reserved.

REV. 2018. 07



WORLDHOMESJM.COM

FORESHORE ESTATE

FOR INFORMATION:
876.382.0012 (Digicel)
876.513.9538 (Flow)